

## Crackle

The dramatic appearance of crackle takes on the characteristics of aged metal patina because each unique application produces random splitting and blistering that result in interesting multilayer depth. Sophisticated. Bold. Adventurous. Great for a fireplace surround or a powder room.

*Fractured Gold SWF 402*



*Crackling Embers SWF 406*



### **Time Required:**

For an average room with 400 sq. ft. of wall space, it will take you approximately 12 total hours over 3 to 4 days.

### **Before You Begin:**

You'll find a variety of color combinations for this technique in the Faux Impressions™ store display. Once you narrow down your options, Sherwin-Williams® recommends that you create a sample board to finalize your color selection and practice your technique before tackling an entire wall.

### **Additional Support:**

Watch a step-by-step video of these application techniques at [sherwin-williams.com/faux](http://sherwin-williams.com/faux).

## Supplies:

Items needed for a 400 sq.-ft. wall area:

- Contractor Series® faux technique sample boards
- One roll of 2" low-tack/safe-release tape
- Assorted drop cloths and rags
- Paint tray
- 9" roller frame
- Two 9" Contractor Series® premium roller covers (3/8" nap)
- 9" Contractor Series® microfiber roller cover (1/16" nap)
- Nylon/polyester brush
- 6¼" roller frame
- Two 6" Contractor Series® premium roller covers (3/8" nap)
- 6" Contractor Series® microfiber roller cover (1/2" nap)
- Two large sea sponges
- Symphony by Purdy™ sea sponge glazing mitt
- Latex gloves
- Two gallons of Duration Home® Interior Latex Matte paint (base coat color)
- One gallon of Faux Impressions™ Metallic Crackle
- Three quarts of Faux Impressions™ Waterborne Polyurethane Gloss
- One quart of Faux Impressions™ Latex Glaze
- One quart of Duration Home® Interior Latex Matte paint (glaze color)
- XIM Latex Extender (optional)

# How to create a Crackle finish.

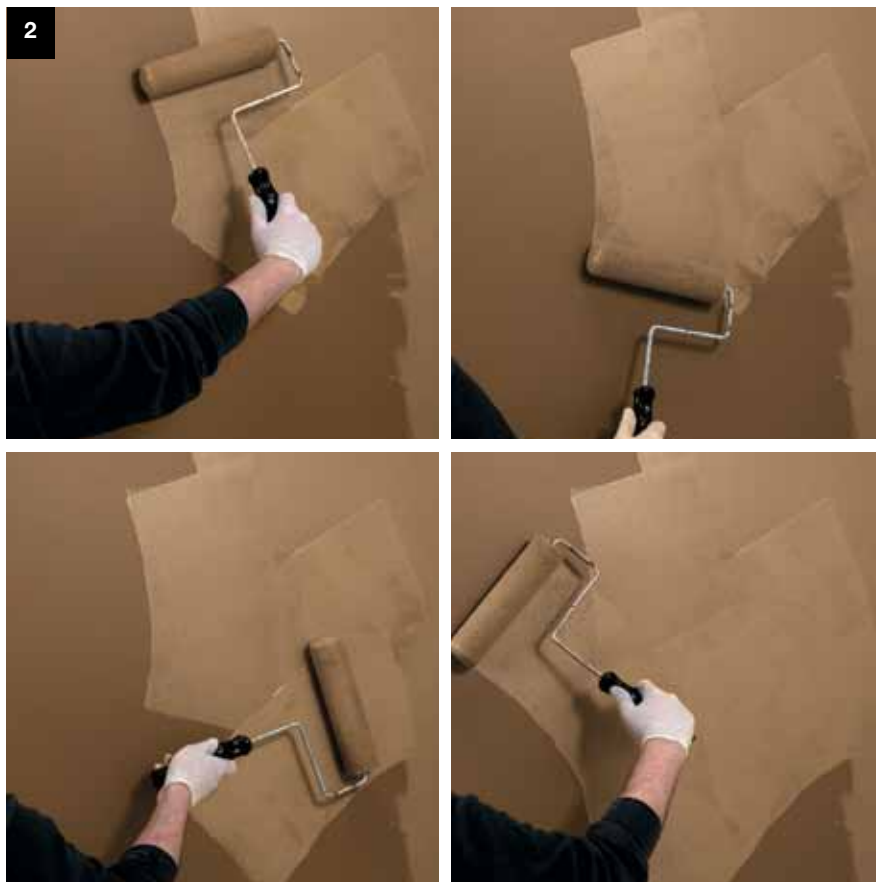
**Step 1 Apply Base Coat Color:** Apply two coats of Duration Home® Interior Latex Matte paint in your base coat color, following the label directions for recommended drying and recoat times. Matte finish is required for proper results.

You may use a brush to cut into corners and around trim, but while the paint is still wet, immediately blend it into the body of the wall with a 6" premium 3/8" nap roller (**diagram 1**). This is an important technique to follow, as any brush marks will create an unwanted "picture frame" effect around the edges of your wall when you're finished. Cover the remainder of the wall using your 9" premium 3/8" nap roller.



**General Preparation:** Clear the area of all decorative items and move furniture to the center of your room. Protect any adjacent surfaces such as ceilings, wood trim and baseboards by masking them with low-tack tape. Spread drop cloths over floors and furniture. If using a ladder, be certain that it is sturdy and will reach all necessary areas safely. Properly clean and prepare all surfaces prior to applying any products.

**Step 2 Coat with Metallic:** After allowing the base coat to dry completely, apply the Faux Impressions™ Metallic. Use a brush to cut into corners and around trim, but immediately blend it into the body of the wall using a 6" microfiber ½" nap roller—again to reduce the appearance of a “picture frame” around the room when you are finished. Fill in larger areas with a 9" x ¾" microfiber roller. Generously apply Metallic using a curving motion in a random, overlapping pattern (**diagram 2**).



**Step 3 Roll on Crackle:** The following day, roll a thin, even coat of Faux Impressions™ Crackle over the entire surface using your 6" and 9" premium ¾" rollers (**diagram 3**).

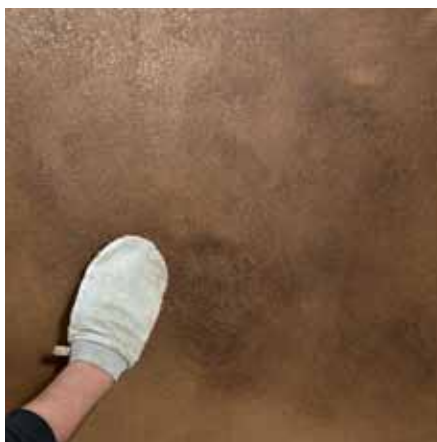
**Step 4 Sponge on Polyurethane:** Between 1 and 4 hours after completing Step 3, your wall should be dry, yet slightly tacky to the touch. At this point, you are ready to apply Minwax® Polycrylic® Waterborne Polyurethane Gloss. Waiting longer than 4 hours to apply polyurethane will reduce the crackle effect.

Moisten one sponge and dip it into the polyurethane. Press and lift the flattest edge of the loaded sponge against the wall. Do not brush or slide. Cover an area within comfortable reach (**diagram 4**). Then gently pounce over that area with a dry sponge to remove excess material, leaving a thin even film (**diagram 4B**). Work from top to bottom and across the wall, slightly overlapping adjacent areas. Do not re-wet an area once you have completed your application because this may pull the existing material off of the surface and reduce the effect.

Some sagging and dripping of the polyurethane will enhance the appearance of your finish, but heavy, pronounced drips may prove to be too dramatic of an effect once glazed. Allow to dry overnight.



5B



### Step 5A Mix Decorative Glaze:

Once the polyurethane is dry, you are ready to mix your decorative glaze. Pour 8 ounces of Faux Impressions™ Latex Glaze into a mixing container and add 8 ounces of Duration Home® Interior Latex Matte (glaze color). For ease of application and additional open time, add XIM Latex Extender to the Glaze mixture. Stir the contents to create a uniform solution. This mixture will cover approximately 350–400 square feet.

Apply a small amount of the glaze mixture to the moistened sea sponge mitt or a rectangular cellulose sponge. Coat the surface evenly using a wooden stir stick or your hand.

**Step 5B Glaze:** Begin in an upper corner and rub the glaze on the wall using a random circular action similar to applying wax to a car. Reload the glazing mitt or sponge often, and blend the areas as you move along the wall (**diagram 5B**). As the mitt or sponge dries out, you may go back over any areas to lighten the glaze coverage and reveal more of the texture and base coat color.

Once dry to the touch, gently remove the low-tack tape, reset your room, and enjoy your newly personalized space.

